



# Prospect House - Flat 3

Well Lane, St.Mary's



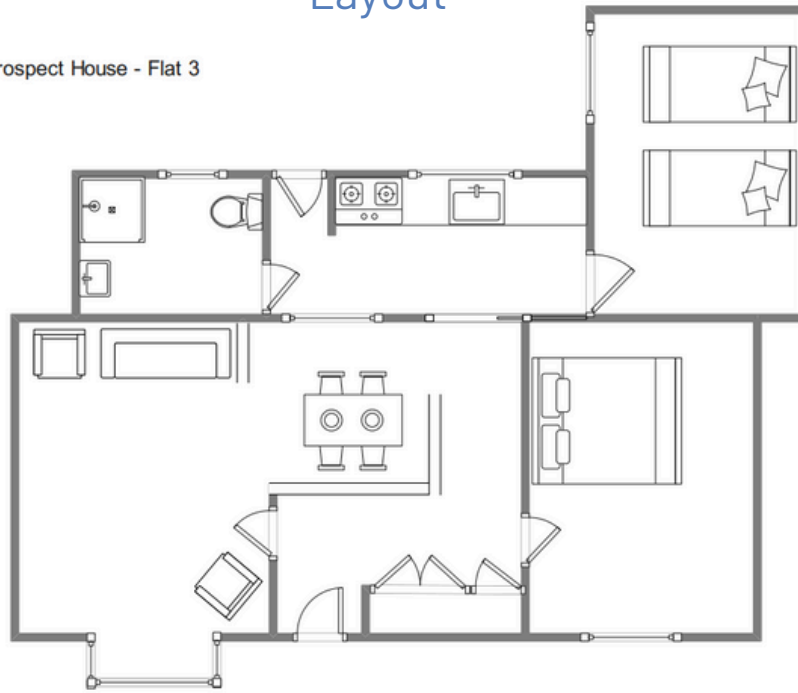
## Sleeps 4 | Monday Change over

- Double and twin arrangements
- Children welcome
- Internet Access
- Central town location
- Close to beaches

Prospect House Flat 3 is situated in a traditional Scillonian building in the heart of Hugh Town and only a few minutes' walk to the beach and harbour. This light and comfortable ground floor accommodation is furnished to a high standard throughout and sleeps four guests in one twin bedroom and one double bedroom. All guest share a newly refurbished family shower room. A fully fitted kitchen provides all the facilities needed in a holiday home, including a microwave, dishwasher and a washer/dryer. A comfortable lounge with dining area completes an ideal family space

# Layout

Prospect House - Flat 3



## Getting to the property

Map of St Marys



Directions from the Quay | Walking time: 5-6 minutes

Head towards the entrance to the quay  
Turn left at The Mermaid Inn on to Hugh Street Enter arch next to Post office into Well Lane

Continue for about 30 yards Prospect House is on the right Flat 3 is accessed directly from Well Lane

What3words: [panning.consented.baked](https://www.what3words.com/panning.consented.baked)